



Our custom designed mobile adoption trailers are an excellent way to increase the visibility of your agency, department or organization. The trailers are also invaluable in the event of an emergency evacuation due to storms, floods or other calamities.

The trailers shown here are a good example of an all around trailer, suitable for many uses.

Standard features include:

- * White aluminum exterior skin
- * Stainless steel cages with aluminum doors
- * Self draining cages
- * Removable rubber floor mats in cages
- * Waste water holding tank with RV style dump
- * Fresh water holding tank
- * Stainless steel sink with spray nozzle
- * 12 volt pressure pump for water system
- * Stainless steel inner wall liner
- * White ceiling
- * Polished aluminum treadplate floor covering
- * Full insulation
- * 12 volt roof mount exhaust fan
- * Roof vents for travel
- * Fluorescent interior lighting--120 volt
- * 12 volt interior lights
- * 12 volt rear flood light
- * 120 volt outlets inside and outside
- * RV style generator built into an insulated closet
- * 20 gallon tongue mounted fuel tank
- * 13,500 BTU Carrier brand roof mount air conditioner with 5600 BTU heater
- * Rear ramp gate to allow easy access
- * Side door for additional access on 18' & 24'
- * Fold out steps under side door on 18' & 24'
- * Steel belt radial tires with spare tire
- * RV dump kit with hose and adapters
- * Rear stabilizer jacks



Over for additional information

Give us a call or e-mail and we will be glad to help you design a trailer to meet your needs. The possibilities are endless as to size, capacity and number of cages. All trailers have Lexan viewing panels with awnings, as shown.

Many users of our Adoption/Rescue trailers report dramatic increases in the number of adoptions. The ability to carry several pets to a public place not only draws attention to your organization, but increases the likelihood of an adoption. When the general public is able to see the animals in a clean, professional, sanitary environment, more adoptions will take place.

Many of our customers have been able to fund the trailer with donations and grants. Some organizations are even selling advertising space on the trailer itself as an excellent way for local businesses to lend support.

The additional floor space inside our trailers allows room to transport additional animals in an emergency. Portable kennels or cages can be wheeled up the rear ramp and additional animals can be carried to safety or protected from the elements.

The 6' x 12' model is a favorite with smaller departments and organizations. It is small enough to be towed with almost any mid to full size pickup, van or SUV. It will carry up to 12 animals and is small and lightweight enough for ease of handling. The trailer lends a professional look to any organization and is large enough to draw attention to your location.

The 7' x 18' model is our best seller. It is able to be towed with any full size pickup, van or SUV. The size of the trailer allows for transportation of up to 22 animals in separate cages, while it is still maneuverable. The 7' body width means that standard rear view mirrors are generally all that is needed to be able to travel safely.

The trailer is also large enough to command attention when it is set up in a parking lot or at a county fair.

The 8' x 24' model is the largest standard model. Larger trailers are available on a custom basis. The 8 x 24 model requires a 3/4 ton pickup for towing and is an excellent choice for larger organizations. The trailer can accommodate up to 43 animals in separate compartments. It has a larger generator and dual air conditioning. Awnings for viewing the animals, located on both sides of the trailer, allow for a much larger flow of traffic. The size of the 8 x 24 model also makes it an excellent choice for rescue and evacuation situations.



See separate sheets for floor plans, features and pricing

**Jones Trailer Company, Woodson, Texas
Celebrating 30 years in Business**



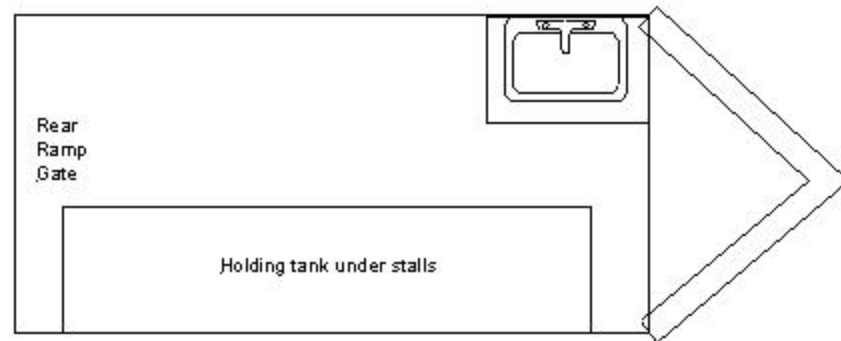
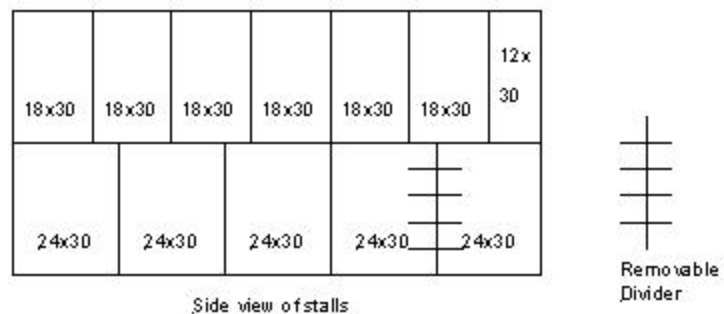
6' X 12' ADOPTION / RESCUE TRAILER

Features;

All steel framework with white aluminum exterior skin.
Tandem axles with electric brakes and steel belt radial tires, including spare tire.
Heavy Duty rear ramp gate, spring assisted closing, non slip aluminum tread plate surface.
Fully insulated body, 7'6" inside ceiling height.
Stainless steel inner wall lining, white vinyl ceiling.
110 volt fluorescent lighting and 12 volt DC lighting.
Built in 4800 watt Generac brand generator with external 20 gallon fuel tank.
13,500 BTU Carrier brand roof mount air conditioner with 5600 BTU heater.
Stainless steel cabinet with stainless steel sink, 12 volt DC pressure pump.
20 gallon fresh water holding tank, 25 gallon waste water holding tank.
RV style dump valve for waste water holding tank.
Additional pressurized water outlet under cabinet for standard garden hose connection.
2 solid awnings on curb side of trailer raise and lock in position to allow easy viewing of pets through a plexiglass wall.
12 volt DC exhaust fan, roof mount, 965cfm capacity.
Exterior wall vents allow for air circulation in mild weather.
25' shoreline to allow electrical hookup to standard household 110 volt receptacle.
11 animal compartments, expandable to 12 compartments with removable dividers.
All animal compartments have stainless steel floors, ceilings and permanent divider walls.
Wash out drains built into all animal compartments to allow easy clean up. Waste water is drained into the 25 gallon waste tank for dumping at a later time.
Rear stabilizer jacks allow the trailer to be leveled when parked.
Electrical system includes inside and outside receptacles.

Base price is \$24,547.00

See attached list for available options.



6' X 12' Adoption/Rescue Trailer
Stall Configurations

7' X 18' ADOPTION / RESCUE TRAILER

Features;

All steel framework with white aluminum exterior skin.
Tandem axles with electric brakes and steel belt radial tires, including spare tire.
Heavy Duty rear ramp gate, spring assisted closing, non slip aluminum tread plate surface.
Fully insulated body, 7' inside ceiling height.
Stainless steel inner wall lining, white vinyl ceiling.
110 volt fluorescent lighting and 12 volt DC lighting.
Built in 4800 watt Generac brand generator with external 20 gallon fuel tank.
13,500 BTU Carrier brand roof mount air conditioner with 5600 BTU heater.
Stainless steel cabinet with stainless steel sink, 12 volt DC pressure pump.
20 gallon fresh water holding tank, 25 gallon waste water holding tank.
RV style dump valve for waste water holding tank.
Additional pressurized water outlet under cabinet for standard garden hose connection.
2 solid awnings on curb side of trailer raise and lock in position to allow easy viewing of pets through a plexiglass wall.
12 volt DC exhaust fan, roof mount, 965cfm capacity.
Exterior wall vents allow for air circulation in mild weather.
25' shoreline to allow electrical hookup to standard household 110 volt receptacle.
17 animal compartments, expandable to 22 compartments with removable dividers.
All animal compartments have stainless steel floors, ceilings and permanent divider walls.
Wash out drains built into all animal compartments to allow easy clean up. Waste water is drained into the 25 gallon waste tank for dumping at a later time.
Rear stabilizer jacks allow the trailer to be leveled when parked.
Electrical system includes inside and outside receptacles.

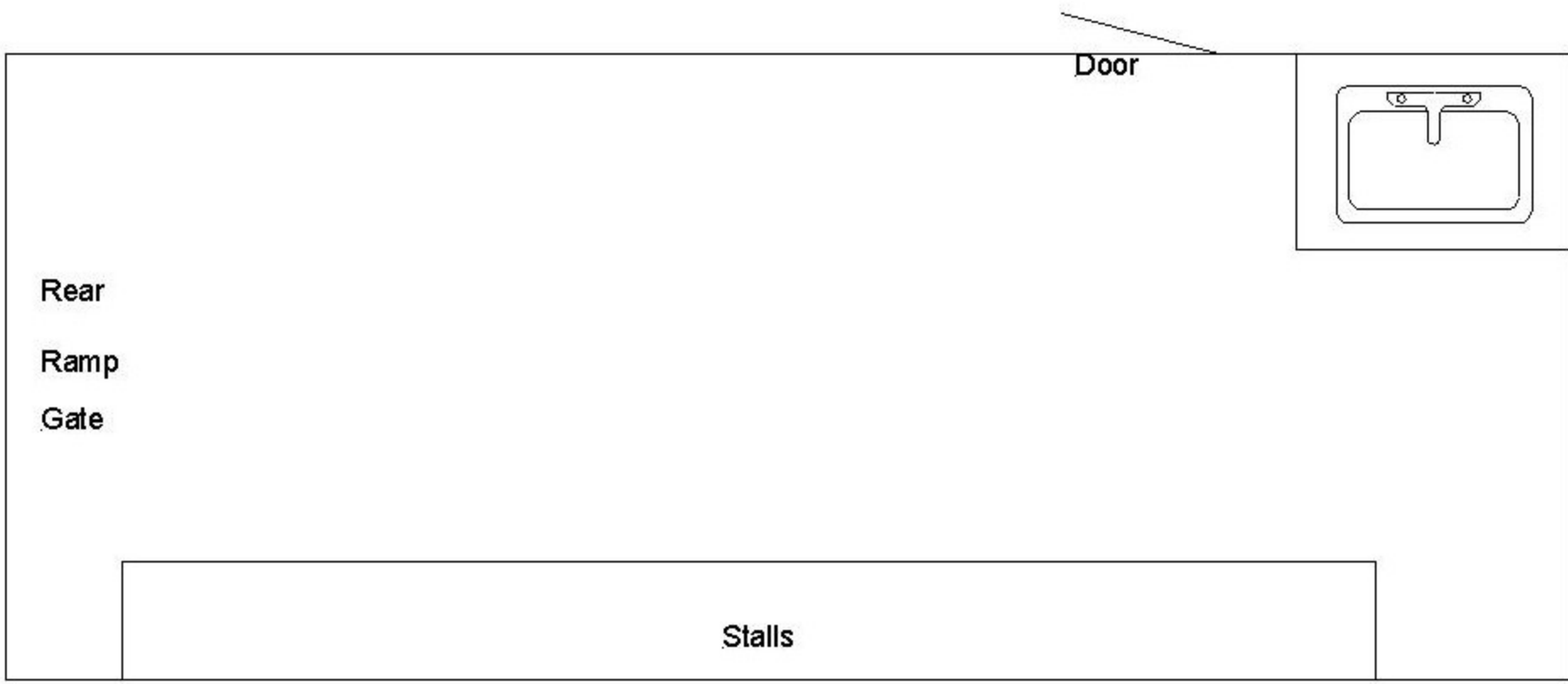
Base price is \$29,940.00

See attached list for available options.

18x 30	18x 30	18x 30	18x 30	12x 30	12x 30	12x 30	12x 30	12x 30	12x 30	24x 30	24x 30
18x 30	18x 30	15x 30	15x 30	15x 30	15x 30	24x 30		24x 30		24x 30	24x 30



Removable
Dividers



7'x18' Adoption/Rescue Trailer
Stall Configurations

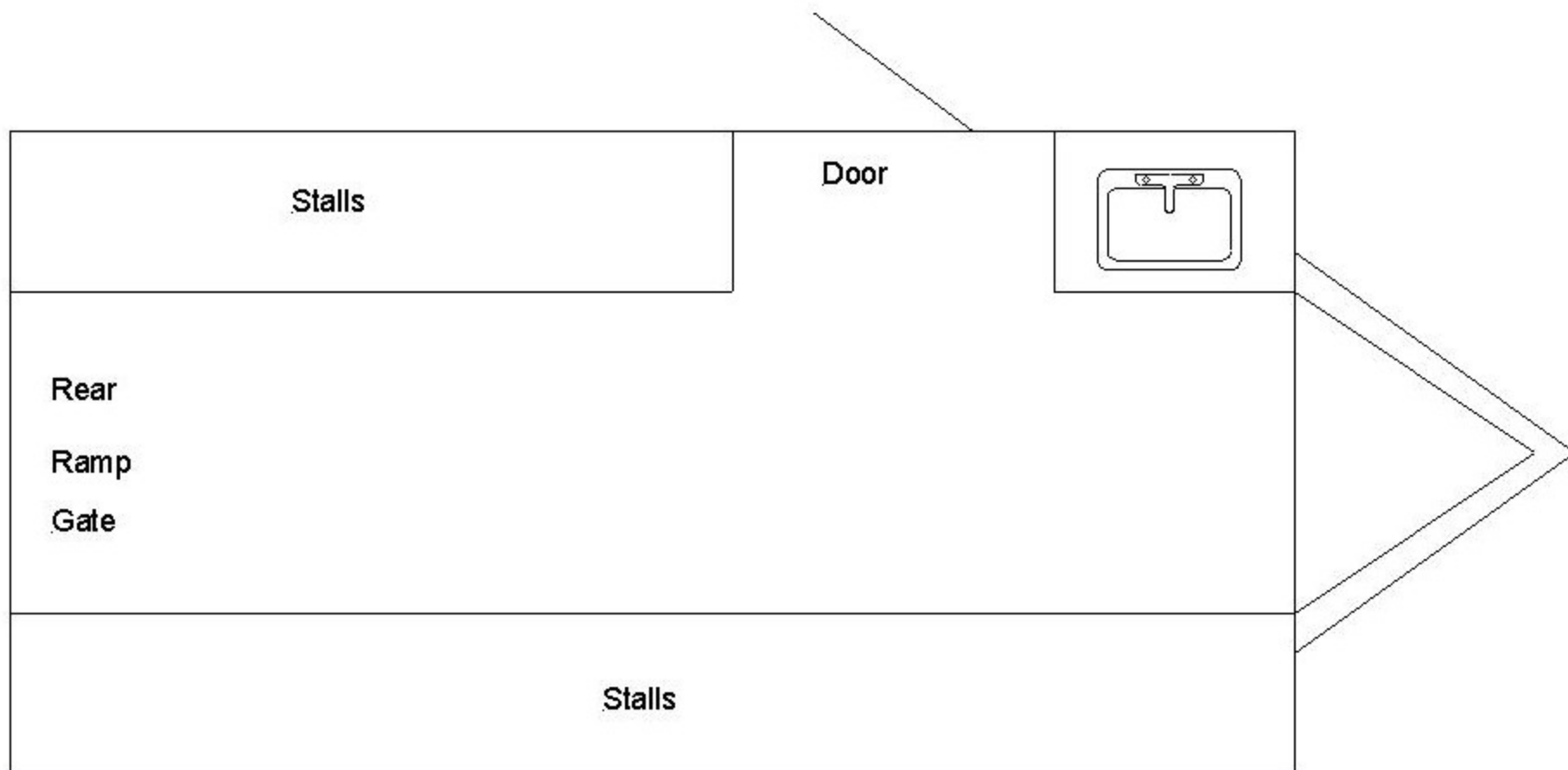
8' X 24' ADOPTION / RESCUE TRAILER

Features;

All steel framework with white aluminum exterior skin.
Tandem axles with electric brakes and steel belt radial tires, including spare tire.
Heavy Duty rear ramp gate, spring assisted closing, non slip aluminum tread plate surface.
Fully insulated body, 7' inside ceiling height.
Stainless steel inner wall lining, white vinyl ceiling.
32" side door with inside release.
110 volt fluorescent lighting and 12 volt DC lighting.
Built in 6500 watt Generac brand generator with external 20 gallon fuel tank.
2-13,500 BTU Carrier brand roof mount air conditioners with 5600 BTU heaters.
Stainless steel cabinet with stainless steel sink, 12 volt DC pressure pump.
30 gallon fresh water holding tank, 35 gallon waste water holding tank.
RV style dump valve for waste water holding tank.
Additional pressurized water outlet under cabinet for standard garden hose connection.
3 solid awnings on curb side of trailer and 2 solid awnings on road side raise and lock in position to allow easy viewing of pets through a plexiglass wall.
Electric tongue jack.
12 volt DC exhaust fan, roof mount, 965cfm capacity.
Exterior wall vents allow for air circulation in mild weather.
25' shoreline to allow electrical hookup to standard household 110 volt receptacle.
38 animal compartments, expandable to 43 compartments with removable dividers.
All animal compartments have stainless steel floors, ceilings and permanent divider walls.
Wash out drains built into all animal compartments to allow easy clean up. Waste water is drained into the 35 gallon waste tank for dumping at a later time.
Rear stabilizer jacks allow the trailer to be leveled when parked.
Electrical system includes inside and outside receptacles.

Base price is \$44,785.00

See attached list for available options.



8'x24' Adoption/Rescue Trailer

Inside View

18"	18"	18"	18"	18"	18"	18"	18"	18"	18"	18"	18"	18"	18"	18"	18"	18"
24"	24"	24"	24"	24"	24"	24"	24"	24"	24"	24"	24"	24"	24"	24"	24"	



Removable
Dividers

Passenger Side

18"	18"	18"	18"	18"	18"	18"	18"	24"
24"	24"	24"	24"	24"	24"	24"	24"	

Drivers Side

8'x24' Adoption/Rescue Trailer
Stall Configuration



Jones Trailer Co.

P O Box 247
Woodson, Tx. 76491

Phone 940-345-6808
Fax 940-345-6505

Options for Adoption/Rescue Trailers:

6500 watt Generac Generator, required for systems with two air conditioners.....	\$1770.00
Additional 13,500 BTU Carrier air conditioner with 5600 BTU heater, requires 5500 watt generator option	\$1075.00
Roof rack and ladder with non-slip aluminum tread plate roof surface.....	\$1820.00
Roll up awning, driver's side of trailer, 16' long.....	\$970.00
Exterior 110 volt flood lights.....	\$189.00
Exterior 12 volt flood lights.....	\$59.00
RV style side door, 30" wide.....	\$370.00
Electric tongue jack.....	\$375.00
Water heater, 6 gallon, requires 6500 watt generator with one air conditioner or 7500 watt generator with two air conditioners.....	\$415.00
Storage bench with padded top, 7' L x 16" W.....	\$440.00
Additional cabinets, stainless steel.....	P. O. R.
Roof mounted fold up sign boards, 16' x 4'	\$1925.00
Different animal compartment configurations.....	P. O. R.
7500 watt Generac generator, required for systems with two AC and water heater	\$2870.00
Additional reserve batteries, each.....	\$189.00
Front surgery room, requires 8 x 24 trailer.....	P. O. R.